

Park Rules and Regulations

The following “Pennekamp Lobster Exclusion Zones” are closed to the harvest of any lobster species and are marked with white and orange information spar buoys.

- Turtle Rocks
- Basin Hills Shoals
- Mosquito Banks
- Mosquito Banks South
- Higdon’s Reef
- Cannon Patch
- Three Sisters North
- Three Sisters South

See adjacent chart for location and GPS coordinates. Chart is not to be used for navigational purposes.

Sport Season: is always the last consecutive Wednesday and Thursday in July. Begins 12:01 a.m. last Wednesday in July and ends at 12:00 midnight on the last Thursday in July. **All of John Pennekamp Coral Reef State Park is closed** during the 2-day sport lobster season to the harvest of any lobster species.

Regular season: Begins at 12:01 a.m. on August 6, and ends at 12:00 midnight on March 31. **In addition** to the above named “Pennekamp Lobster Exclusion Zones,” during the regular lobster season **no person shall harvest lobster from or within any coral formation (patch reef).**

It is also prohibited to harvest lobster from any “artificial habitats”, which are defined as material (e.g. wood, metal, concrete, plastic) that has been placed to provide cover and habitat for spiny lobster.

In addition, in Unincorporated Monroe County, during the **3 days preceding Sport Season, the entirety of Sport Season and the first 5 days of Regular Season,** there is **no diving or snorkeling** within:

- 300 feet of improved residential or commercial shoreline
- Any manmade or private canal
- Any public or private marina

Bag limit: Six (6) lobsters per day for each recreational harvester.

Facts for All Seasons: What to Know, Before You Go...

Bag Limits: The federal bag limit cannot be combined with the state bag limit.

Possession: Lobster must be of legal size before they are in possession. NOTE: You may not have lobster in your possession in Everglades National Park.

Egg-bearing (berried) lobster regardless of species must be released unharmed. Stripping egg-bearing females of eggs, and possession of spiny or ridged slipper lobster tails from which eggs have been removed is prohibited. Eggs are an orange, yellow, brown or red mass found covering the underside of the lobster's tail.

Gear such as spears, hooks, wire snares, and any device which could puncture, penetrate or crush the shell of the lobster is prohibited.

"Bully-netting" is defined as using a circular frame attached at a right angle to the end of a pole and supporting a conical bag of webbing. Possession of bully nets is prohibited in Everglades National Park.

"Hoop-netting" is defined as using a frame, circular or otherwise, supporting a shallow bag of webbing and suspended by a line and bridles. Possession of hoop nets is prohibited in Everglades National Park.

"Artificial Habitat" is defined as material (e.g. wood, metal, concrete, plastic) that has been placed to provide cover and habitat for spiny lobster. Does not include fishing gear allowed by FL FWC Commission, Florida DEP or Army Corps permitted artificial reefs (e.g. Duane, Eagle, Thunderbolt).

License Requirements: Recreational harvesters are required to possess a valid Florida Saltwater Fishing License with a current crawfish endorsement. Consult your license agent for exemptions to licensing requirements.

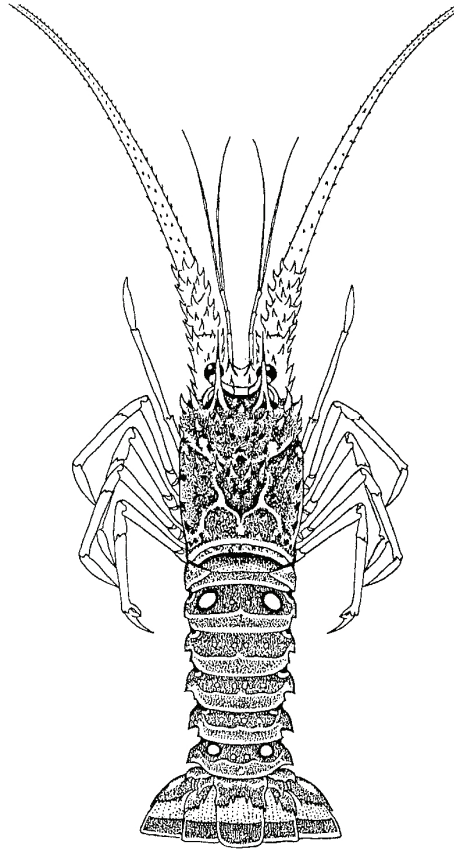
Spanish or spotted (*Panulirus guttatus*) and slipper (*Scyllarides aequinoctialis*) lobster are closed year-round to harvest in Key Largo and Looe Key Existing Management Areas, Everglades National Park, Dry Tortugas National Park, Florida Keys National Marine Sanctuary Ecological Reserves, Sanctuary Preservation Areas and Special-Use Research Only Areas. During the regular lobster season, they are closed to harvest in John Pennekamp Coral Reef State Park Lobster Exclusion Zones and from or within coral formations (patch reefs) within the Park.

Commercial Lobster Traps: It is a felony to molest, damage, or take lobster from traps in state or federal waters.

Dive Flag: In state and federal waters, all divers and snorkelers in the water are required to post a Diver-Down flag.

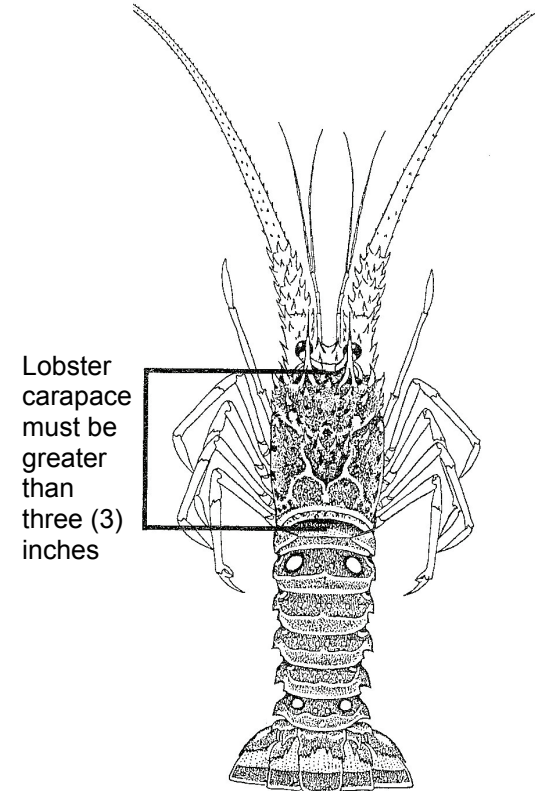
Coral is protected from damage and removing in state and federal waters. Do NOT touch, hold on to, stand on, break or other wise harm coral. It is a fragile living animal.

Regulations for Recreational Harvest of Lobster in John Pennekamp Coral Reef State Park



Florida Spiny Lobster
Panulirus argus

- ### Measuring Lobster
- ✓ Each harvester must have a gauge, made for measuring lobster, in their possession while harvesting in the water.
 - ✓ All lobster must be measured in the water and released unharmed if undersized.
 - ✓ Lobster carapace must be greater than three (3) inches.
 - ✓ All recreationally harvested lobster must remain in whole condition while at sea.
 - ✓ Tails may only be separated on land. When the tail is separated from the body, it must be greater than 5½ inches.



FLORIDA
State Parks
...the Real Florida



Large
Print

Alternative format
available upon request.