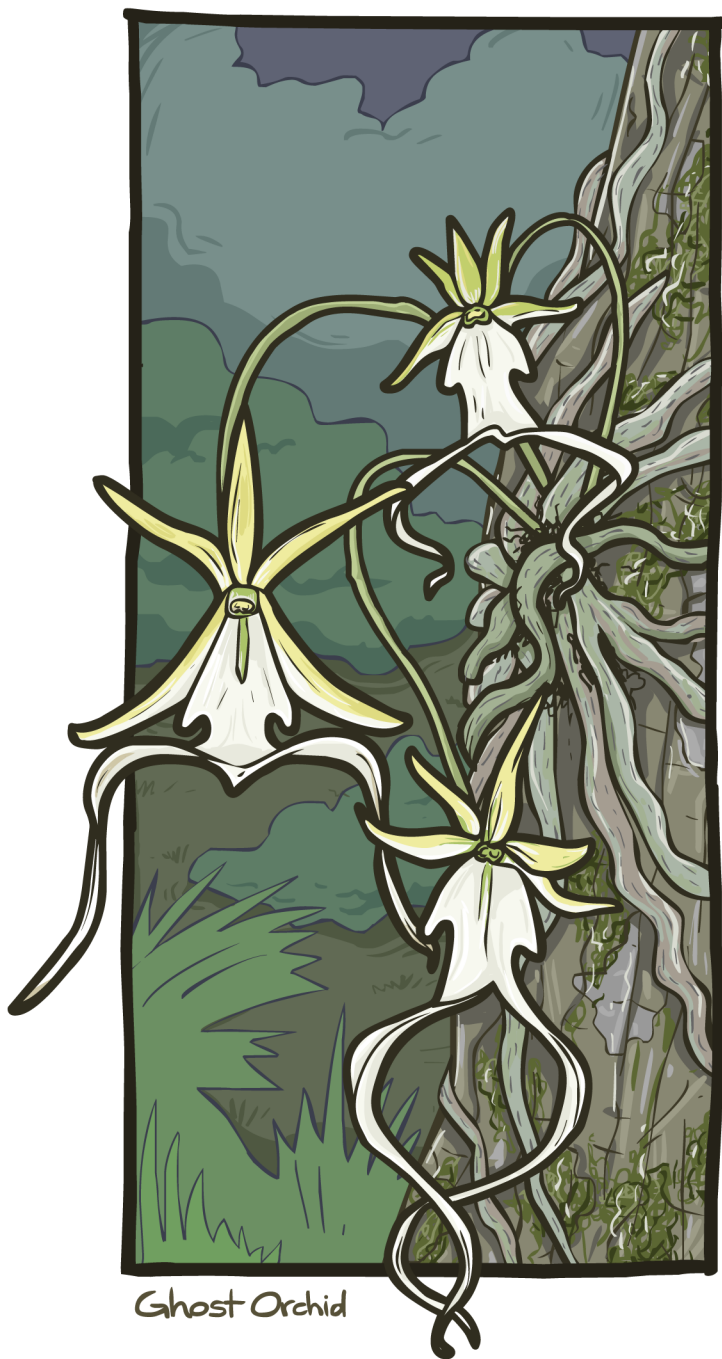


Ghost Orchid

(*Dendrophylax lindenii*)



Instant ID

- A white-flowered epiphyte (a plant which grows on another) without leaves
- Has green roots which anchor it to the tree and perform photosynthesis (turn sunlight, water and carbon dioxide into sugar)
- Roots are covered in velamen (a hair-like layer which collects moisture and nutrients from the air)
- Bloom is up to 1 2/3 inches across and 3 3/4 inches long and is supported by an arching stem
- Has five petals, arranged like a star, and one broad petal with two tendrils

Native Niches

- Grows in protected swamps and moist woods of South Florida and some Caribbean islands

Ghost Orchid

(Dendrophylax lindenii)



Plant Particulars

- Rarest of Florida's 99 native orchid species
- Predicted to have originated from African orchid seeds carried by the wind
- Not described by science until 1844
- Only pollinated by the giant sphinx moth
- Caterpillars of the giant sphinx moth eat the pond-apple
- An estimated 5-10% of plants bloom in a year, peaking June-August and smelling similar to apples

Population Protection

- Listed as an endangered species
- Largest threats are logging, development and illegal harvesting
- Preserving ghost orchid habitat is the best way to ensure its continued survival
- Can be found at Fakahatchee Strand Preserve State Park