

Africanized Honey Bee

Africanized Honey Bee

(Apis mellifera scutellata)

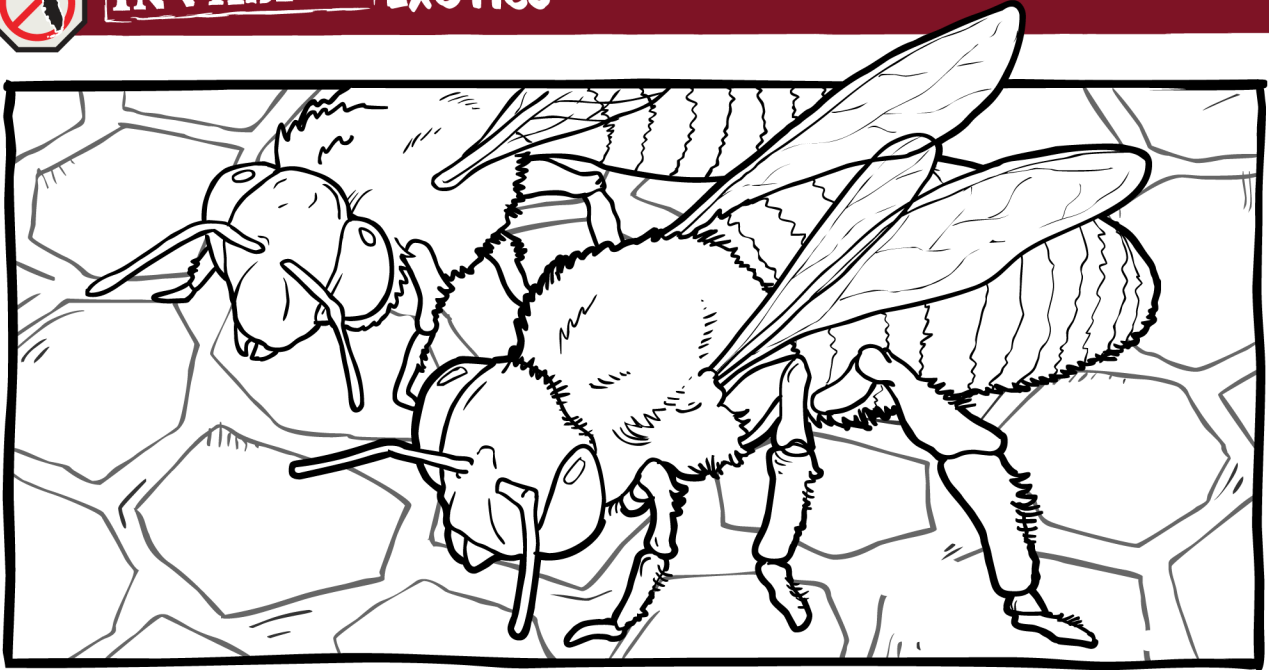
Instant ID

- A yellow and black insect about 1/2 inch long with four clear wings, a fuzzy thorax (middle body section) and striped abdomen (hind body section)
- Identical in coloration to a European honey bee, but about 10% smaller
- A laboratory test is needed to distinguish between honey bees

Hijacked Habitats

- A hybrid of European and African honey bees
- Accidentally released in Brazil and spread to southwestern United States and southern Florida
- Less selective about hive locations than other honey bees. Will use meter boxes and other human-made sites





Africanized Honey Bee

Africanized Honey Bee

(Apis mellifera scutellata)

Favorite Foods

- Flower pollen and nectar
- Royal jelly (a specialized honey) is fed to future queen bees
- The “waggle dance” communicates the location of flowers

Critter Characteristics

- Defends more area with more drones than European honey bee
- Called “killer bees” because of the intensity of their attack when defending the hive

Population Prevention

- Africanized bees invade and take over commercial hives and are more likely to swarm (move to a new area)
- If attacked, just run. Do not attempt to dive in water or swat them

